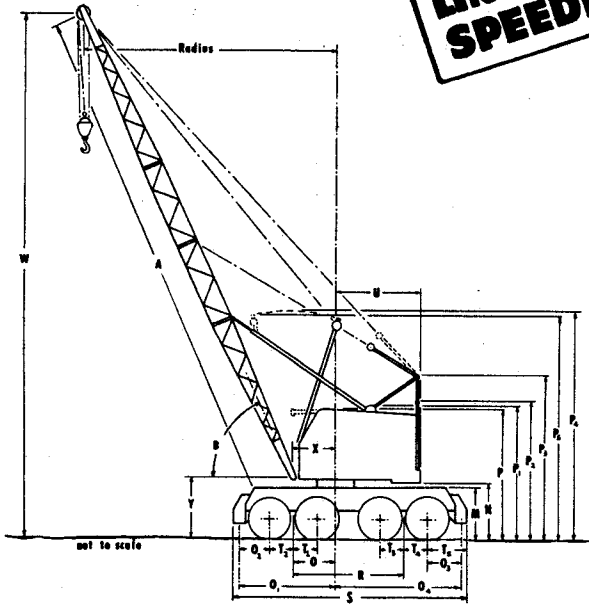


**LINK-BELT
SPEEDER**

UC-98A 35-Ton Lifting Crane Flysheet

35 TON WHEEL-MOUNTED CRANE (PSCA CLASS 12-210)
(Supersedes Flysheet CRF4112—10-62)



These specifications comply with the recommended Commercial Standard CS90-58, developed under the National Bureau of Standards and issued by the United States Department of Commerce.

GENERAL INFORMATION ONLY

GENERAL DIMENSIONS

Basic angle or tubular "Hi-Lite" boom length	A	40' 0"	Over-all carrier length with outriggers	S	22' 6"
Boom angle	B		Center rear axle to pivot of bogie	T1	2' 3"
Over-all height top of ring gear plate	M	4' 5"	Center rear axle to pivot of bogie	T2	2' 3"
Ground clearance under counterweight	N	5' 0"	Center front axle to pivot of bogie	T3	2' 3"
Centerline rotation to rear axle bogie	O	4' 0"	Center front axle to pivot of bogie	T4	2' 3"
Centerline rotation to rear outrigger center	O1	9' 3"	Center front axle to front bumper	T5	3' 11"
Center rear axle to rear outrigger center	O2	3' 0"	Tailswing of counterweight	U	11' 5"
Center front axle to front outrigger center	O3	3' 3"	Radius of boom hinge pin—angle boom	X	3' 2"
Centerline rotation to front outrigger center	O4	11' 11"	Radius of boom hinge pin—tubular "Hi-Lite" boom	X	4' 1"
Over-all cab height	P	12' 0"	Height of boom hinge pin—angle boom	Y	6' 9"
Over-all height low gantry ^①	P1	12' 5"	Height of boom hinge pin—tubular "Hi-Lite" boom	Y	5' 4"
Over-all height retractable gantry lowered ^②	P2	12' 11"	Minimum ground clearance		0' 11"
Over-all height retractable gantry raised	P3	16' 3"	Over-all cab width		8' 0"
Over-all height "Hi-Lite" boom gantry vertical	P4	27' 4"	Over-all width outriggers retracted		11' 1"
Over-all height "Hi-Lite" boom gantry with boom horizontal	P5	18' 5"	Over-all width outriggers extended		17' 5"
Wheel base	R	10' 6"			

① Low gantry available at reduction in price for angle booms only up to and including 55 feet. Consult factory if capacities required.
② With boom suspension slack. When boom is supported by the mast, over-all height of the mast bail is 13'3".

BRIEF SPECIFICATIONS

LIFTING CRANE AND CLAMSHELL

Approximate working weight with retractable high gantry, counterweight "A", but no bucket, hook block or tagline winder

With 40' angle boom	78,400 lbs.
With 40' tubular "Hi-Lite" boom	79,830 lbs.

Swing speed ----- 4 r.p.m.

Lifting Crane Lagging	Line Pull	Line Speed
13/4" hoist (front)	23,100 lbs.	@ 146 f.p.m.
13/4" hoist (rear)	22,400 lbs.	@ 146 f.p.m.

Clamshell Lagging		
15/4" closing (front)	20,200 lbs.	@ 167 f.p.m.
15/4" holding (rear)	19,600 lbs.	@ 167 f.p.m.

DRAGLINE

Approximate working weight with retractable high gantry, counterweight "A", but no bucket

With 40' angle boom	78,900 lbs.
With 40' tubular "Hi-Lite" boom	80,410 lbs.

Swing speed ----- 4 r.p.m.

Lagging	Line Pull	Line Speed
13/4" inhaul (front)	23,100 lbs.	@ 146 f.p.m.
15/4" hoist (rear)	19,600 lbs.	@ 167 f.p.m.

POWER UNITS

Suitable for operation up to 4,000' above sea level. For operation at higher altitudes consult factory.
Standard—Waukesha 140GZ gasoline engine with hydraulic coupling, six cylinder, 109 net h.p. @ 1710 r.p.m. full load speed.
Optional at extra cost—Diesel: General Motors and Caterpillar.
—Gasoline: Waukesha.

**WE ARE CONSTANTLY IMPROVING OUR PRODUCTS AND THEREFORE RESERVE
THE RIGHT TO CHANGE DESIGNS AND SPECIFICATIONS
For Certified Dimensions, Consult Factory**

LINK-BELT SPEEDER

Link-Belt Speeder
Cedar Rapids, Iowa

Link-Belt Speeder (Canada), Ltd.
Woodstock, Ontario

Printed in U.S.A.

Flysheet CRF4147—4-65

Website: Cranes101.com

Email: info@cranes101.com

Phone: 866-788-7600

HBGS-291-7-205